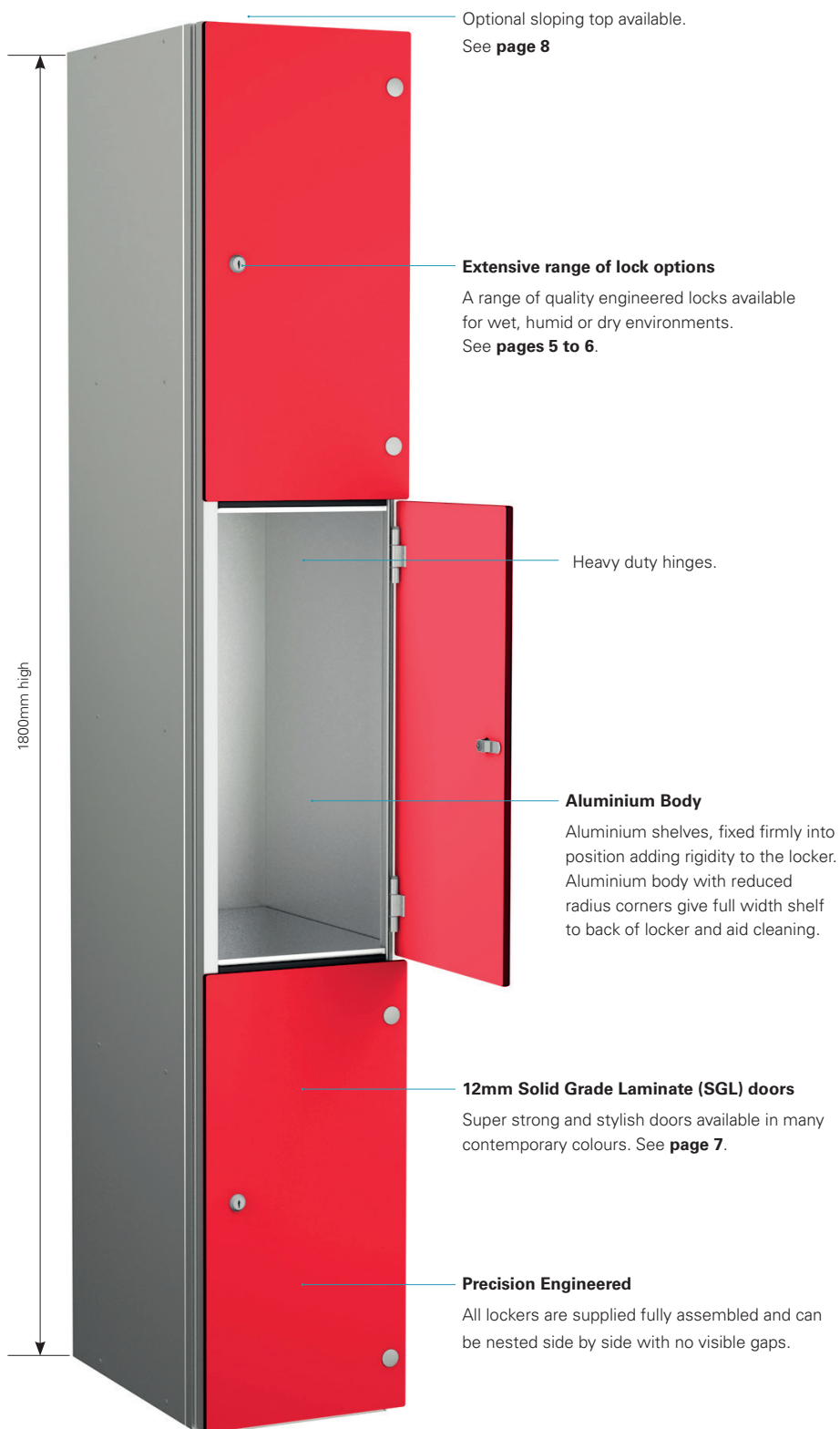


ZenBox lockers



Designed and engineered ZENBOX lockers are the perfect choice for demanding environments.

ZENBOX lockers are designed and engineered to withstand the rigours of high use wet area environments where the requirements of design with durability and image are paramount.

- Leisure Centres
- Swimming Pools
- Schools
- Gyms
- Spas

**MADE IN
BRITAIN**

PROBE FIRE ZERO

Probe Steel Products are fire tested and approved in line with European Standard - EN 13501-1: 2007 +A1: 2009



Important note regarding locker installations

Wherever possible lockers should be secured to ensure stability. Single lockers should ideally be fixed back to a wall. Runs of lockers should be fixed together side-to-side and either fixed back to a wall or fixed back-to-back to another run of lockers.

ZenBox locker range

End panels to match doors

End panels can be manufactured to add on to the end of locker runs or to the side of each individual locker if required.

1800mm high



Single compartment

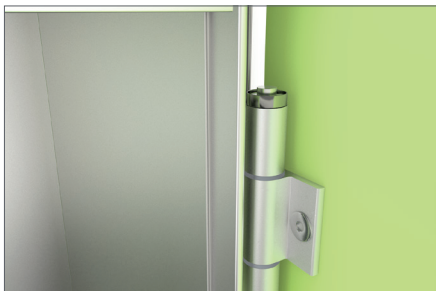
Fixed top shelf with
double coat hook.

Two compartment

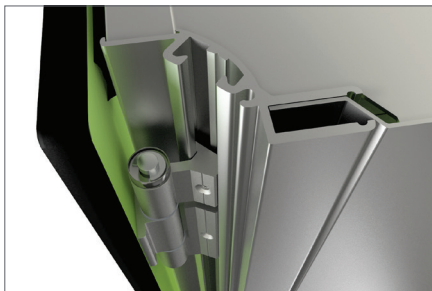
Double coat hook
per compartment.

Height - 1800mm*	
Width mm	Depth mm
300	450
300	500
400	450

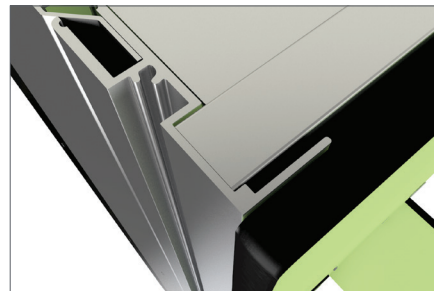
* Height rises by 150mm with sloping top



Heavy duty self-closing hinges engineered to prevent the doors opening across adjacent compartment.



Concealed hinge within extruded aluminium frames engineered for added strength and stability.



Flush frame for zero gap when lockers are nested.

ZenBox Ultra outdoor lockers



Sloping top

ZenBox Ultra lockers feature sloping tops to aid water dispersion.

Height - 1800mm*	
Width mm	Depth mm
300	450
300	500
400	450

Available in 1, 2, 3 , 4 and 6 compartments



Integral door seal

This seal ensures there is no water ingress into the locker compartment.



Incorporating all the benefits of the standard ZENBOX locker, ZENBOXULTRA features solid grade laminate doors and added door seals, making them the perfect choice for outdoor areas.

The additional integral door seal ensures there is no water ingress into the locker compartment.

End panels can be manufactured to add on to the end of locker runs or to the side of each individual locker if required.



Important note regarding locker installations

Wherever possible lockers should be secured to ensure stability. Single lockers should ideally be fixed back to a wall. Runs of lockers should be fixed together side-to-side and either fixed back to a wall or fixed back-to-back to another run of lockers.

Wet area lock options



Type 3

Probe cam lock*

Even the standard lock has a micro sprung 10 disc lock featuring a massive 3000 serial combinations- all exclusive to Probe. Two keys are included with each standard lock.



Type 2

Hasp and staple*

Attractive design allowing easy use of padlock fitting. Shank diameter maximum 7mm and minimum 5mm

Padlock sold separately.

Replacement hasp & staple

This Hasp & Staple is available to purchase separately if you need to change your existing lock.



Type 11

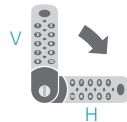
Re-programmable combination lock

User re-programmable.

An effective 4 digit code combination lock with 10,000 possible combinations, making losing keys a thing of the past.

Suitable for multi user applications.

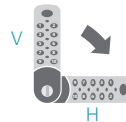
Master override key sold separately.



Type 6

Digital combination lock 40,000 combinations

Simple to program battery operated lock which can last up to 50,000 operations before needing changing. Emergency access using service key. Single user supplied as standard but multi-user option is available (specify when ordering)**Can be used vertically**



Type 10

The RFID keyless digital combination lock

This lock provides contact less RFID locking and can be used independently or paired with existing wireless systems. Simple to upgrade existing installations and compatible with most wireless standards including RFID and NFC, the lock comes with a wide range of accessories and options.



Type 8

Waterproof coin/token Return/Retain

These Waterproof and Chlorine resistant locks are available with coin denominations £/€ or tokens, for either return or retain..



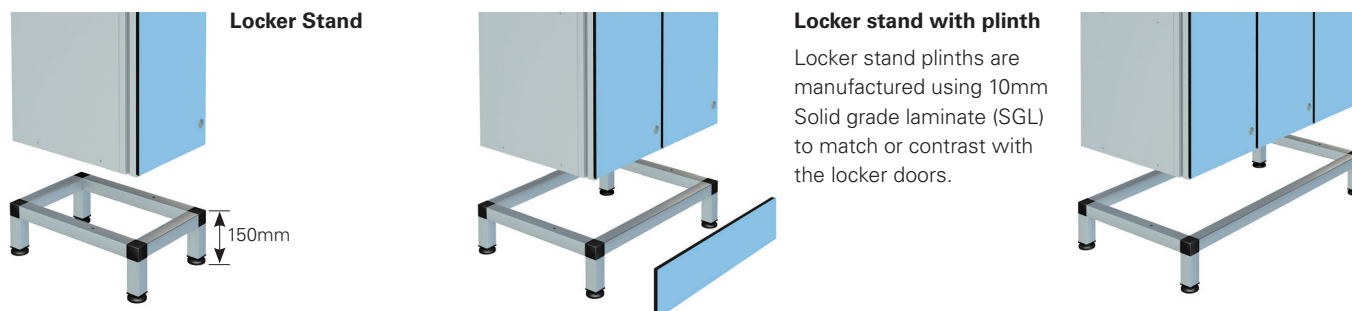
Accessories

Aluminium Locker Support Stands

Locker support stands raise lockers off the floor, reducing impact damage and making cleaning easier. Manufactured from 25mm square aluminium section they are ideal for wet environments.

All units come complete with adjustable feet to aid levelling on uneven floors.

Optional 10mm solid grade laminate (SGL) plinth available to match or contrast with the locker doors.

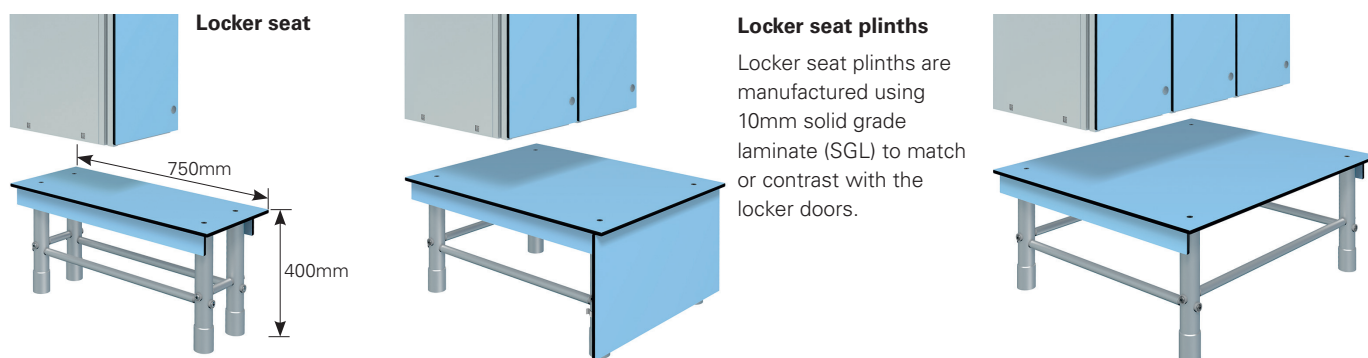


Aluminium Seats and Stands

10mm solid grade laminate seat (SGL) and 45mm aluminium framework form a bench seat in front of the locker, allowing full access to the locker.

Seat can match or contrast with the locker door or with an optional SGL plinth.

All units come complete with adjustable feet to aid levelling on uneven floors.



Sloping Top

Sloping tops are a good way of preventing litter, bags and other items being left on top of the lockers. The sloping top also makes cleaning easier. Sloping tops are essential in hygiene – sensitive applications such as the NHS or food preparation. Sloping tops add 150mm height to the locker.



Numbering System

Optional inset number plates are available. Discs are recessed into the door. Request when placing order.



Probe
A Trusted **Whittan** Brand

3Dlockers
www.3dlockers.co.uk 01924 240291